

Atlantic Meridional Transect and Western Channel Observatory – Working in Partnership

JAMES AYLIFFE

JAMAYL@BODC.AC.UK



**National
Oceanography Centre**
NATURAL ENVIRONMENT RESEARCH COUNCIL

noc.ac.uk

NERC SCIENCE OF THE
ENVIRONMENT

Introduction

- Atlantic Meridional Transect (AMT)
 - What is it?
 - How is BODC involved?
 - Numbers
- Western Channel Observatory (WCO)
 - What is it?
 - How is BODC involved?
 - Numbers



- Working in Partnership



**British
Antarctic Survey**

NATURAL ENVIRONMENT RESEARCH COUNCIL

PML

Plymouth Marine
Laboratory



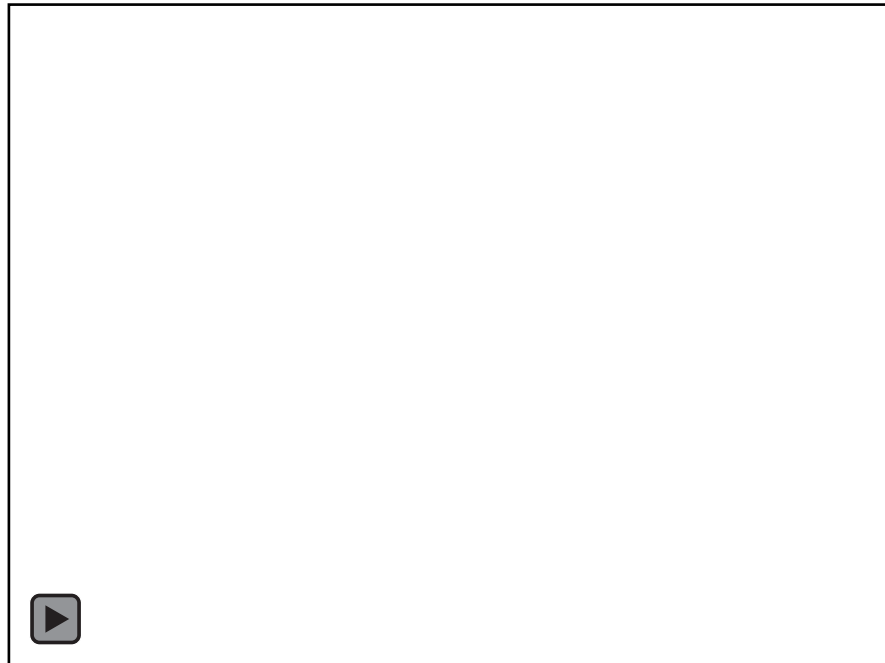
**National
Oceanography Centre**
NATURAL ENVIRONMENT RESEARCH COUNCIL

noc.ac.uk

NERC SCIENCE OF THE
ENVIRONMENT

Atlantic Meridional Transect (AMT)

“The Atlantic Meridional Transect (AMT) is a multidisciplinary programme which undertakes biological, chemical and physical oceanographic research during an annual voyage between the UK and destinations in the South Atlantic.”



<https://www.youtube.com/watch?v=qSjcTcCKMiE&feature=youtu.be>

AMT

“Quantify the nature and causes of ecological and biogeochemical variability in the planktonic ecosystems of the Atlantic Ocean”

“Assess the effects of this variability on biological carbon cycling and air–sea exchange of radiatively active gases and aerosols”

“Unique, spatially extensive, decadal data set continues to be made available to the wider community through the British Oceanographic Data Centre”

Robinson, C., Holligan, P. and Jickells, P. (2006). The Atlantic Meridional Transect Programme. Deep Sea Research Part II: Topical Studies in Oceanography Vol 53, Issues 14-16 pp. 1483-1484.

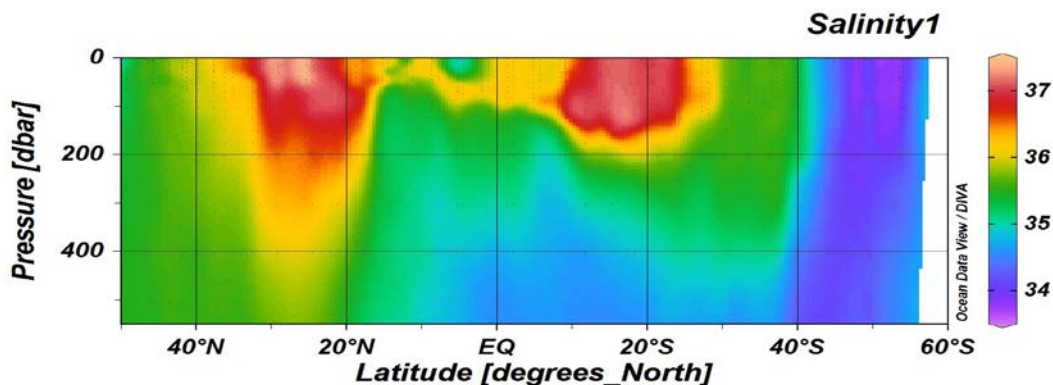
BODC and AMT

Secure archive for receipt of data and metadata for the cruises

Data Management – On board data management (since 2011). Improve efficiency and accuracy of metadata collection.

Promote Good Practice and Develop Standards

Serve and provide access to data



BODC onboard AMT

Science – Discrete fluorometry
and salinity measurements.
Processing CTD profiles.

Managing and Curating Metadata

Advising on Standards

Learning

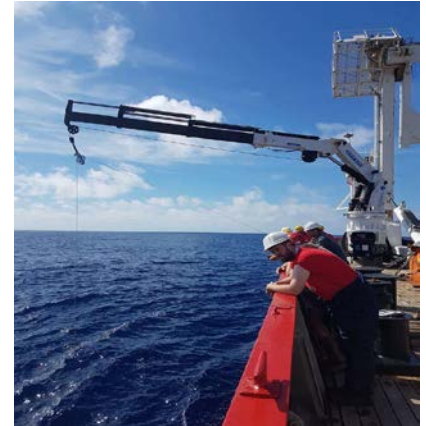
BODC Staff AMT Data Publications

[doi:10.5285/2223243a-65b7-0f04-e053-6c86abc0ed45](https://doi.org/10.5285/2223243a-65b7-0f04-e053-6c86abc0ed45)

[doi:10.5285/2223243a-65b8-0f04-e053-6c86abc0ed45](https://doi.org/10.5285/2223243a-65b8-0f04-e053-6c86abc0ed45)

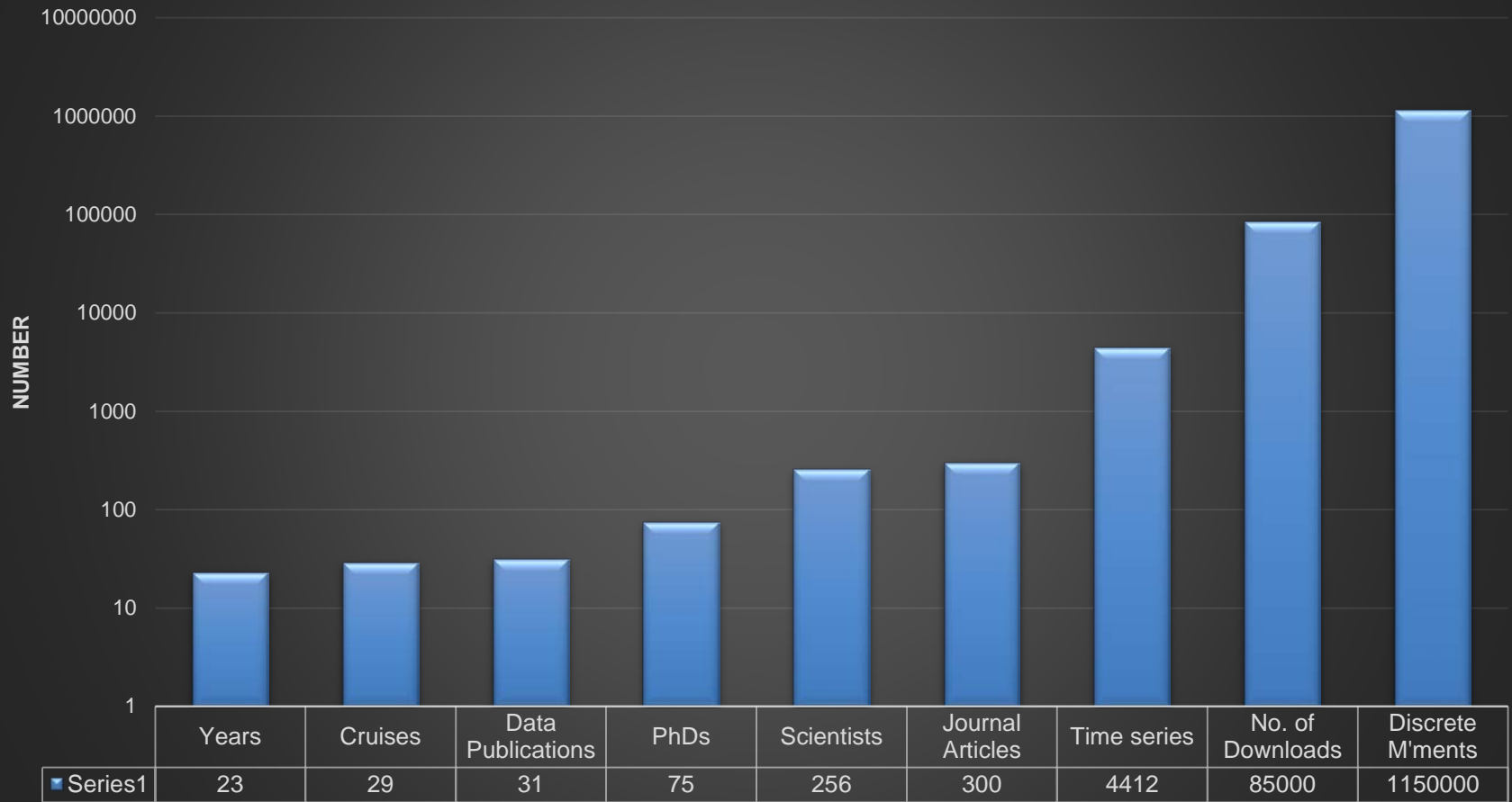
[doi:10.5285/4b64e646-89d0-3b66-e053-6c86abc0e62f](https://doi.org/10.5285/4b64e646-89d0-3b66-e053-6c86abc0e62f)

[doi:10.5285/51723ecf-41e6-11f6-e053-6c86abc0f23e](https://doi.org/10.5285/51723ecf-41e6-11f6-e053-6c86abc0f23e)



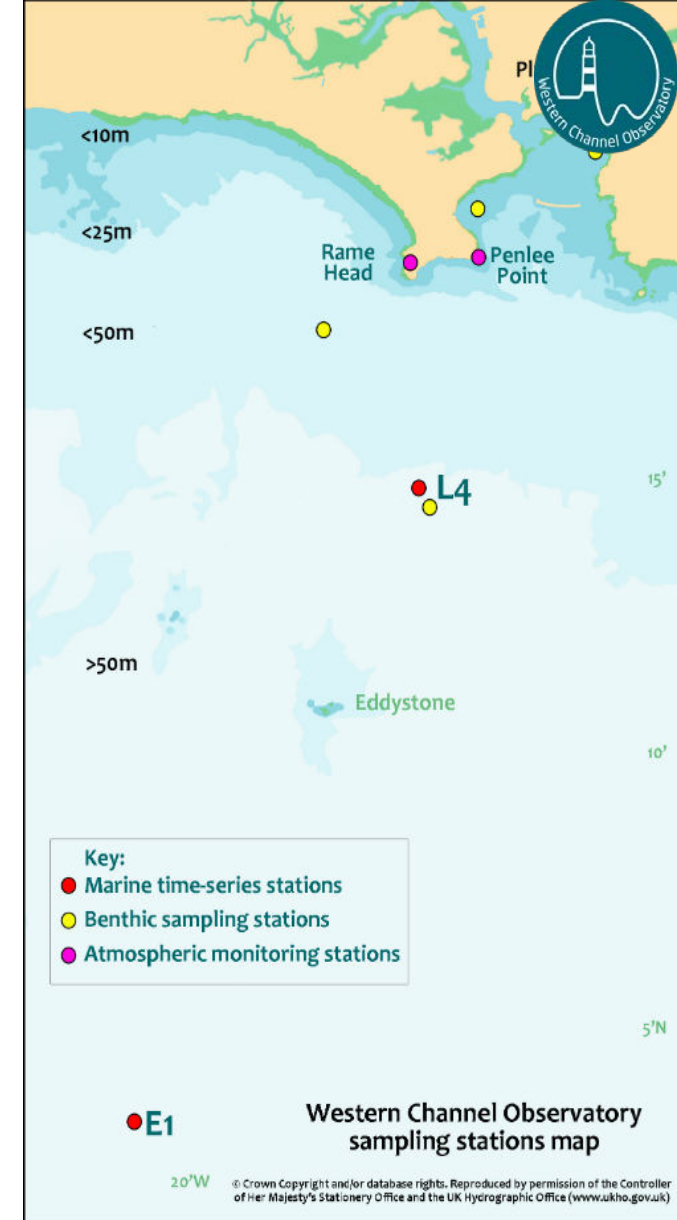
AMT in Numbers

AMT

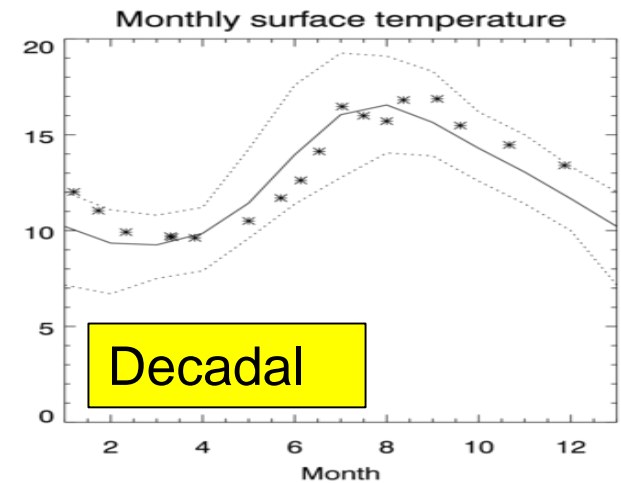
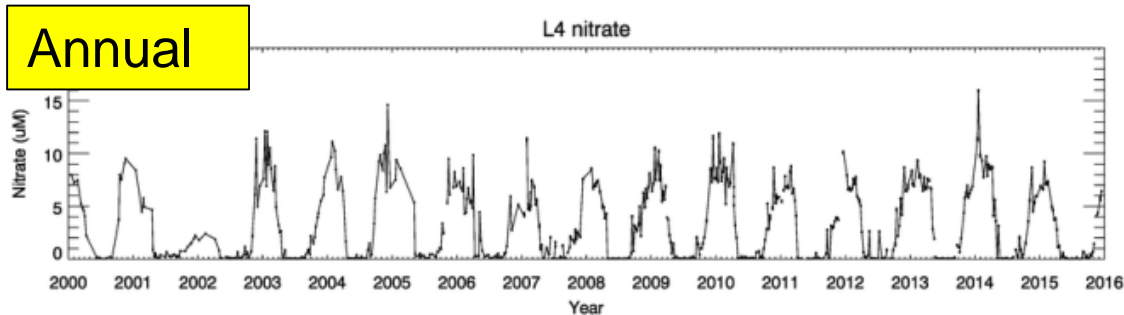
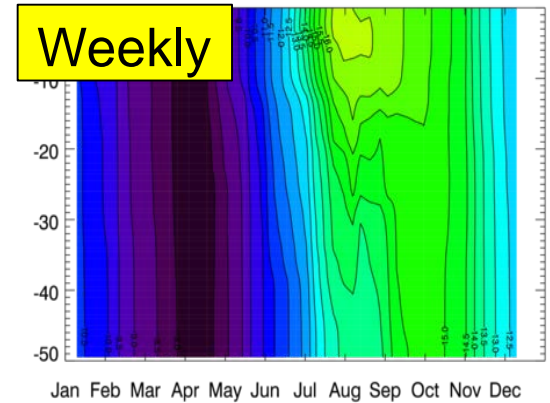
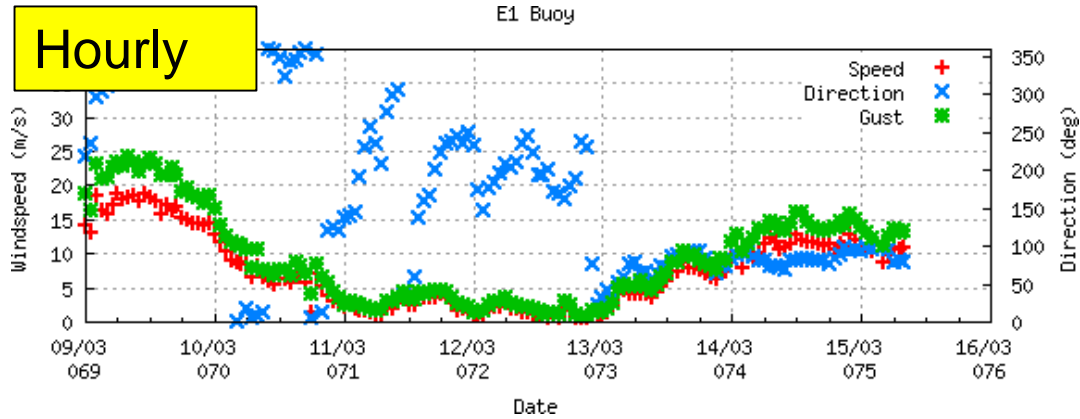


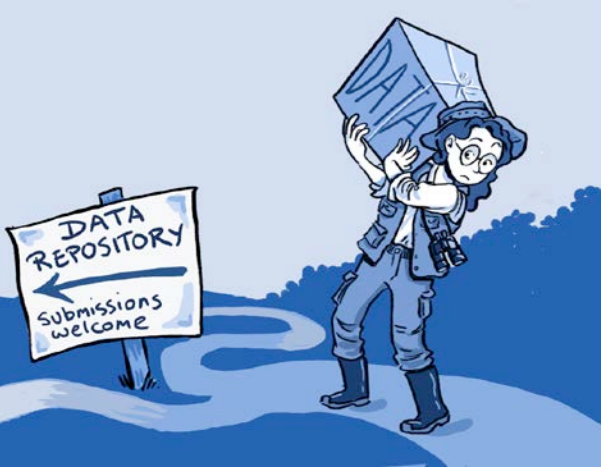
Western Channel Observatory (WCO)

The Western Channel Observatory (WCO) is an oceanographic time-series and marine biodiversity reference site in the Western English Channel. *In situ* measurements are undertaken weekly at coastal station L4 and fortnightly at open shelf station E1 using the research vessels of the Plymouth Marine Laboratory and the Marine Biological Association.

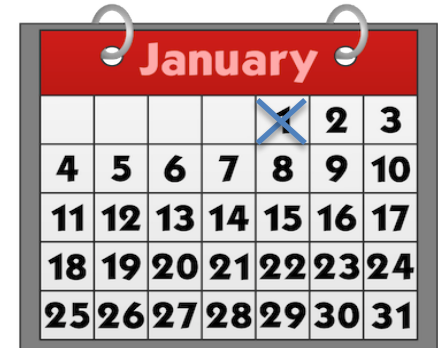


WCO





BODC and WCO



Secure archive for receipt of data and metadata for the cruises

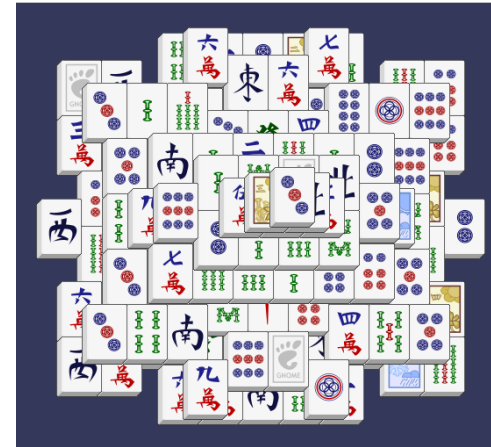
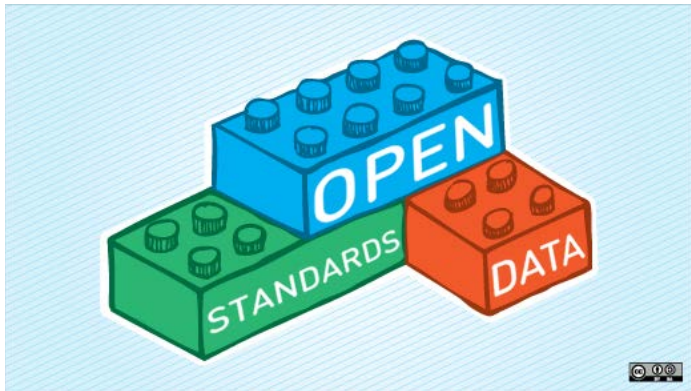
Data Management – Annual submission and curation. WCO >30 years but some data >100 years.

Promote Good Practice and Develop Standards

Serve and provide access to data

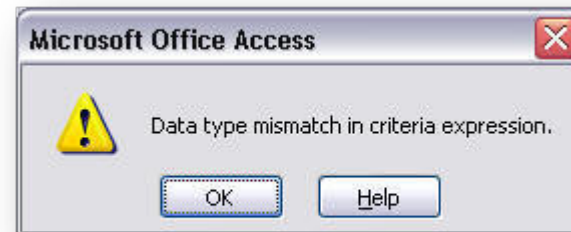
BODC and WCO

Open Data

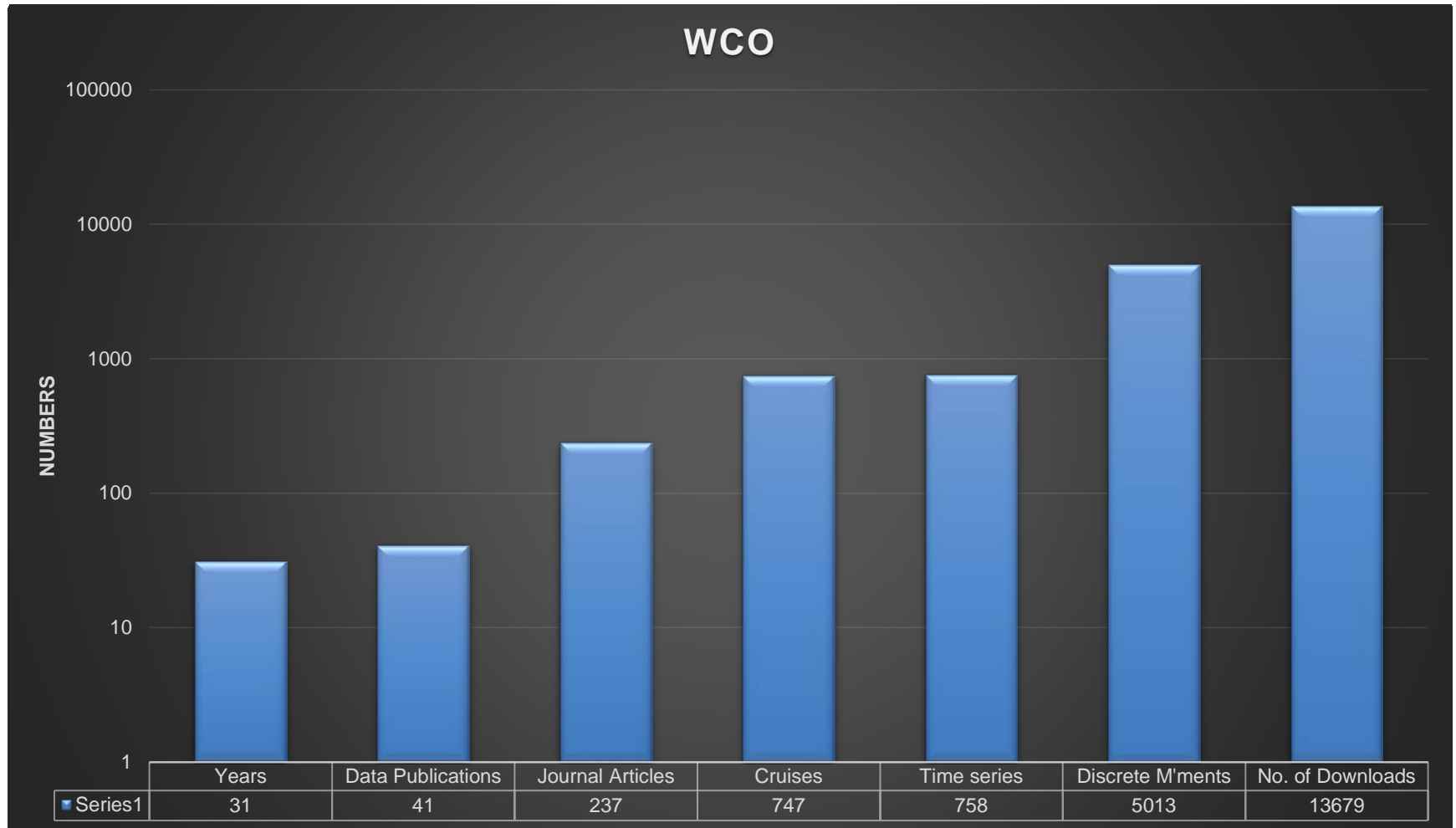


Legacy complexities

Meta(data) Standards



WCO in Numbers





In Partnership



Yes



PML | Plymouth Marine Laboratory

Oregon State University



National Oceanography Centre
NATURAL ENVIRONMENT RESEARCH COUNCIL



UNIVERSITY OF
Southampton

UNIVERSIDADE
DE VIGO



DALHOUSIE UNIVERSITY



noc.ac.uk

NERC SCIENCE OF THE ENVIRONMENT

Times Up

