

GEBCO_08 Grid – artifacts in shallower water regions in the Moreton Bay region off Brisbane, Australia

There are anomalous deep water areas shown in the GEBCO_08 Grid in the region off Brisbane, Australia (153.3°E, 27.14°S). These deeps are artifacts created during the gridding process and may be due to erroneous depth values in a source survey data set used to generate the grid.

Figure 1 shows the GEBCO_08 Grid, colour-coded for depth, for this region. The anomalous deep regions are ringed in black.

The GEBCO_08 Grid has largely been generated by combining measured depth data (collected by ships) with satellite-derived depth estimates in regions where measured data are not available. Grids developed by other methods are included in some areas.

The grid is accompanied by a Source Identifier (SID) Grid. This shows which of the corresponding cells in the GEBCO_08 Grid are based on measured soundings and which have been interpolated. Figure 2 shows data from the SID grid (shown as black dots/lines) overlaid on the GEBCO_08 Grid.

Please see the documentation that accompanies the GEBCO_08 Grid for more information on the generation of the data set:

www.bodc.ac.uk/data/online_delivery/gebco/documents/gebco_08.pdf

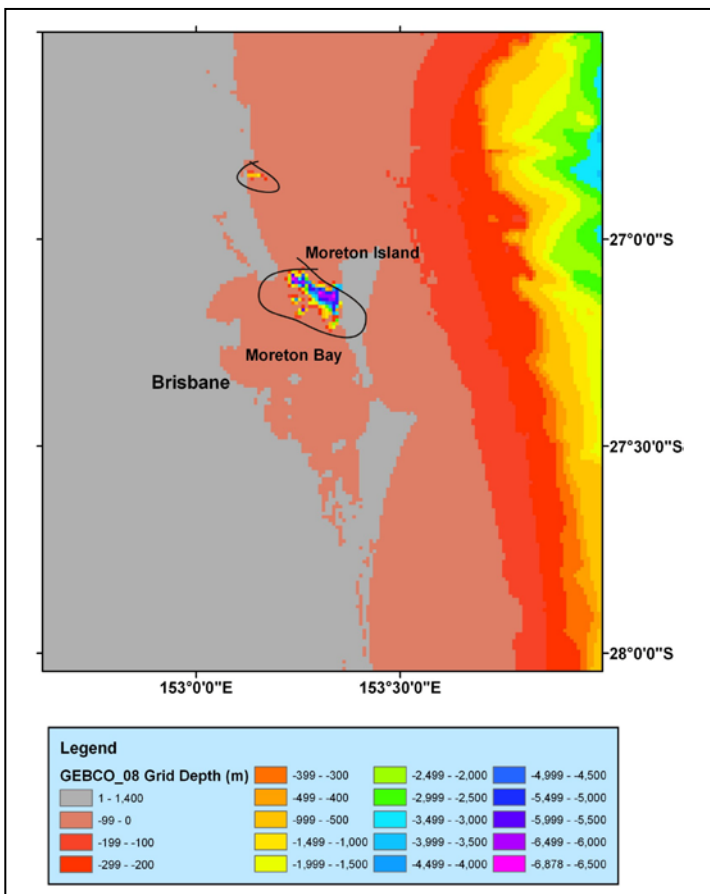


Figure 1 – GEBCO_08 grid with anomalous depths ringed in black

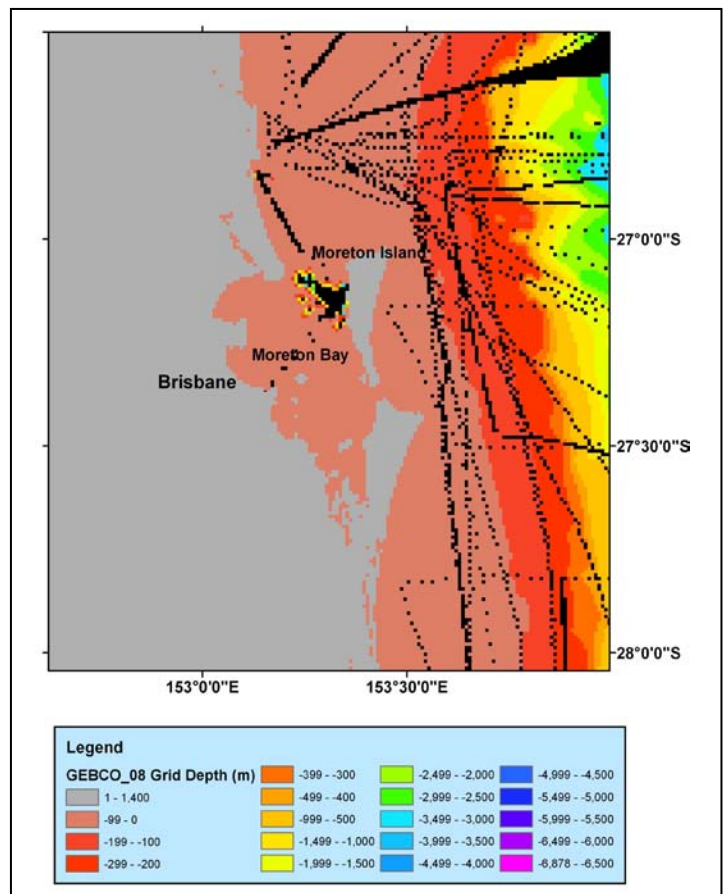


Figure 2 – GEBCO_08 Grid overlain by the SID Grid (shown as black dots/lines)